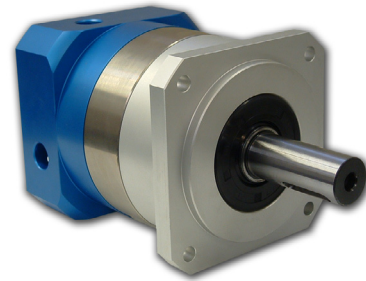
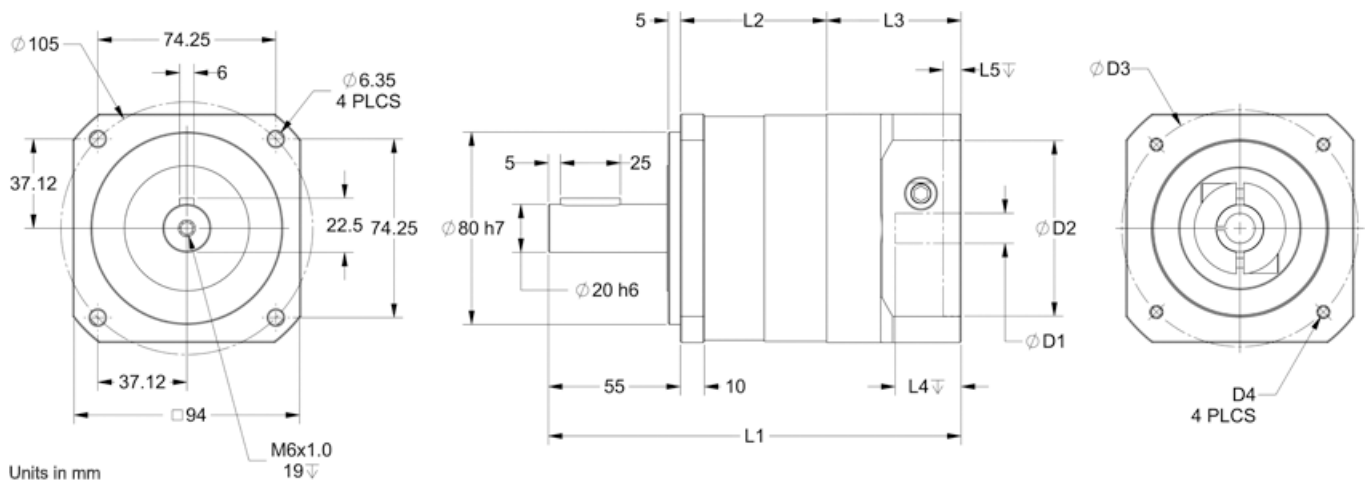


- Backlash as Low as 11 arc-min
- Gear Ratios From 3 to 1000
- Available in 1, 2, 3 and 4 Stage Models
- Patented Precision Clamping System
- Lifetime Lubrication
- High Durability
- Operating Temperature of -15° to 90°C



The GBPH-090-NS Series Planetary Gearbox offers you the precision you need at the prices you want! This Planetary Gearbox is designed with very low backlash for motion control, automation, and robotic applications requiring precise position requirements. This Planetary Gearbox will match many servos or steppers and is ideal for NEMA 34 motors. Designed with the goal of offering a cost-effective product without sacrificing quality, you will find that this Planetary Gearbox offers you an extraordinary value. Please verify all dimensions when matching a gearbox to a specific motor, as critical dimensions will vary among series and manufacturers.



ITEM	DESCRIPTION	MOTOR INTERFACE			
		AA341-500	AA341-625	BLK32-748	EMJ80-748
D1	Input Shaft Diameter	12.7	15.875	19	19
L4	Max Shaft Length	40	40	40	40
L3	Motor Mount Length	56	56	56	56
D2	Pilot Diameter	73.025	73.025	70	70
L5	Pilot Depth	6	6	6	6
D3	Mounting Bolt Hole Circle	98.4	98.4	90	90
D4	Bolt Hole Size	M5	M5	M5	M5

L010455

Model #	Gear Ratio (X:1)	Rated Output Torque (in-lb)	Max Output Torque (in-lb)	Rated Input Speed (RPM)	Stages	Backlash Maximum (arcmin)	L1 Length (mm)	L2 Length (mm)	Weight (lbs)
GBPH-0901-NS-003-xxxx-yyy	3	1239	3717	4000	1	11	172	61	7.7
GBPH-0901-NS-004-xxxx-yyy	4	1487	4461	4000	1	11	172	61	7.7
GBPH-0901-NS-005-xxxx-yyy	5	1372	4116	4000	1	11	172	61	7.7
GBPH-0901-NS-007-xxxx-yyy	7	1469	4408	4000	1	11	172	61	7.7
GBPH-0901-NS-010-xxxx-yyy	10	1239	3717	4000	1	11	172	61	7.7
GBPH-0902-NS-012-xxxx-yyy	12	1239	3717	4000	2	11	172	61	7.7
GBPH-0902-NS-015-xxxx-yyy	15	1487	4461	4000	2	16	198	87	9.9
GBPH-0902-NS-016-xxxx-yyy	16	1487	4461	4000	2	16	198	87	9.9
GBPH-0902-NS-020-xxxx-yyy	20	1487	4461	4000	2	16	198	87	9.9
GBPH-0902-NS-021-xxxx-yyy	21	1239	3717	4000	2	16	198	87	9.9
GBPH-0902-NS-025-xxxx-yyy	25	1487	4461	4000	2	16	198	87	9.9
GBPH-0902-NS-028-xxxx-yyy	28	1469	4408	4000	2	16	198	87	9.9
GBPH-0902-NS-030-xxxx-yyy	30	1239	3717	4000	2	16	198	87	9.9
GBPH-0902-NS-035-xxxx-yyy	35	1487	4408	4000	2	16	198	87	9.9
GBPH-0902-NS-040-xxxx-yyy	40	1487	4461	4000	2	16	198	87	9.9
GBPH-0902-NS-049-xxxx-yyy	49	1487	4460	4000	2	16	198	87	9.9
GBPH-0902-NS-050-xxxx-yyy	50	1372	4116	4000	2	16	198	87	9.9
GBPH-0902-NS-070-xxxx-yyy	70	1469	4408	4000	2	16	198	87	9.9
GBPH-0902-NS-100-xxxx-yyy	100	1469	4460	4000	2	16	198	87	9.9
GBPH-0903-NS-036-xxxx-yyy	36	1487	4460	4000	3	16	224	113	12.1
GBPH-0903-NS-045-xxxx-yyy	45	1487	4460	4000	3	16	224	113	12.1
GBPH-0903-NS-060-xxxx-yyy	60	1487	4460	4000	3	16	224	113	12.1
GBPH-0903-NS-075-xxxx-yyy	75	1487	4460	4000	3	16	224	113	12.1
GBPH-0903-NS-080-xxxx-yyy	80	1487	4460	4000	3	16	224	113	12.1
GBPH-0903-NS-090-xxxx-yyy	90	1487	4460	4000	3	16	224	113	12.1
GBPH-0903-NS-150-xxxx-yyy	150	1487	4460	4000	3	16	224	113	12.1
GBPH-0903-NS-200-xxxx-yyy	200	1487	4460	4000	3	16	224	113	12.1
GBPH-0903-NS-300-xxxx-yyy	300	1487	4460	4000	3	16	224	113	12.1
GBPH-0903-NS-400-xxxx-yyy	400	1487	4460	4000	3	16	224	113	12.1
GBPH-0903-NS-500-xxxx-yyy	500	1487	4460	4000	3	16	224	113	12.1
GBPH-0903-NS-700-xxxx-yyy	700	1487	4460	4000	3	16	224	113	12.1
GBPH-0904-NS-1000-xxxx-yyy	1000	1487	4460	4000	4	16	251	156	12.1

Part numbers are based on the specifications of the motor being matched to the gearbox.

-xxxx denotes motor pilot, -yyy denotes input shaft diameter.

Refer to *Matching the Gearbox to Your Motor* on the first page for more information, or contact an Anaheim Automation Applications Engineer for assistance.

Radial Load:	359 lbs - Force	Axial Load:	1124 lbs - Force
Operating Temperature:	-15° to 90°C	Noise Level:	68 dB
Efficiency:	3~10: ≥ 97; 12~100: ≥ 94; 150~1000: ≥ 95	IP Rating:	IP65

GEAR BOX SIZE	CLAMP SCREW SIZE	CLAMP SCREW TORQUE
GBPH-060	M4 x 16L	4.1 Nm
GBPH-090	M6 x 20L	14.0 Nm
GBPH-120	M6 x 20L	14.0 Nm
GBPH-150	M10 x 30L	67.0 Nm
GBPH-180	M10 x 30L	67.0 Nm

### Matching the Gearbox to Your Motor

To ensure compatibility with the gearbox, it is important to consider that the motor specifications are within the listed ranges below. Motor Bolt Circle Diameter, Input Shaft Diameter, Input Shaft Length, Pilot Thickness, Pilot Diameter and Hole Diameter are required in order to match the motor with the appropriate gearbox, and will be used to determine the complete part number. Please see the Gearbox Mounting form downloadable from our website under *Support - Technical Support - Installations* for more information on required motor data.

Parameter	Range
Bolt Hole Circle Diameter	70mm to 100mm
Input Shaft Diameter	12.7mm to 19mm
Input Shaft Length	40mm Max
Pilot Thickness	8mm Max
Pilot Diameter	50mm to 80mm
Hole Diameter	Any Size